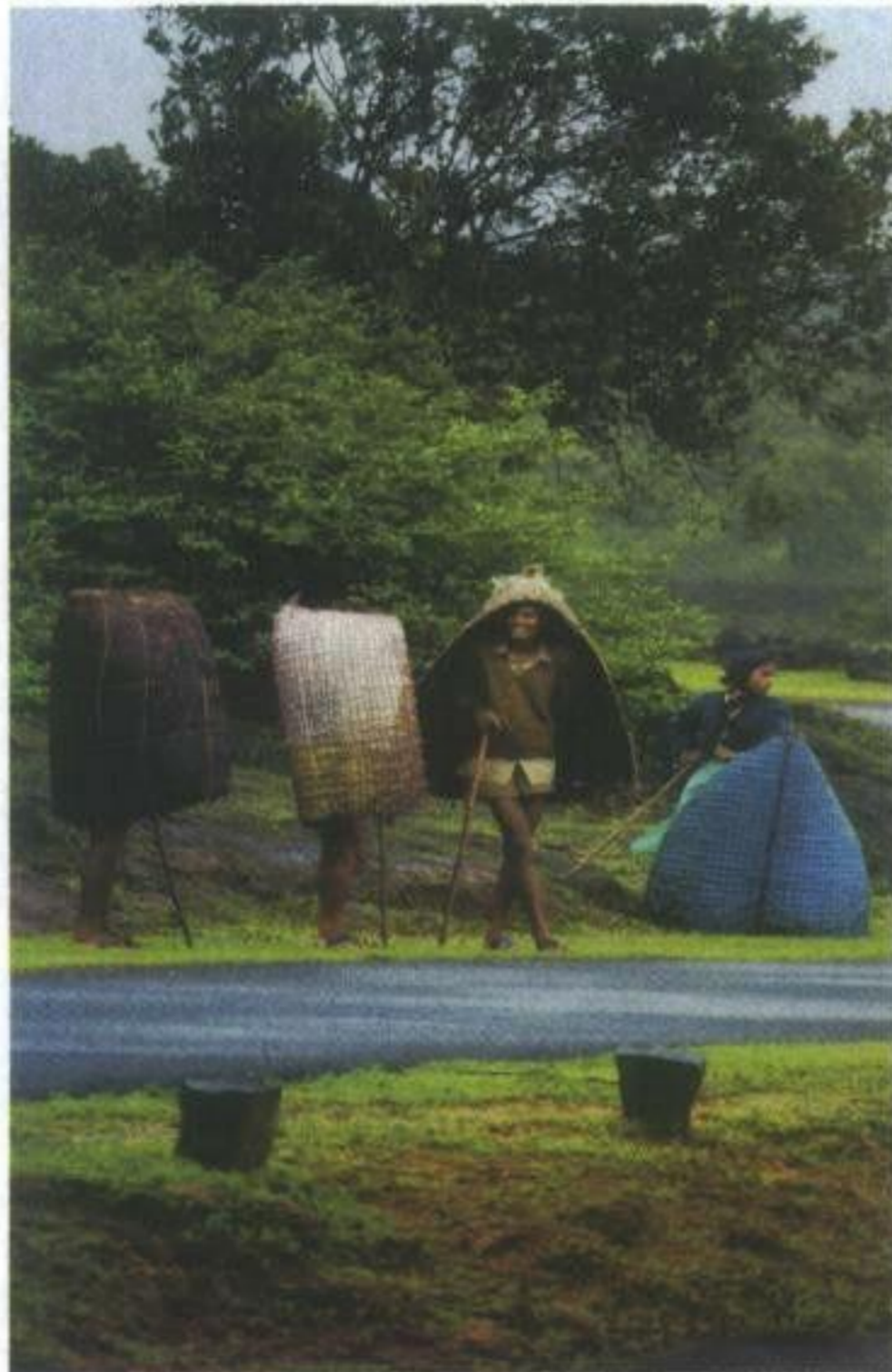


around that are secluded and peaceful. Once you've had your fill of bathing and shivering in the cascading water, you can start exploring the other attractions in town.

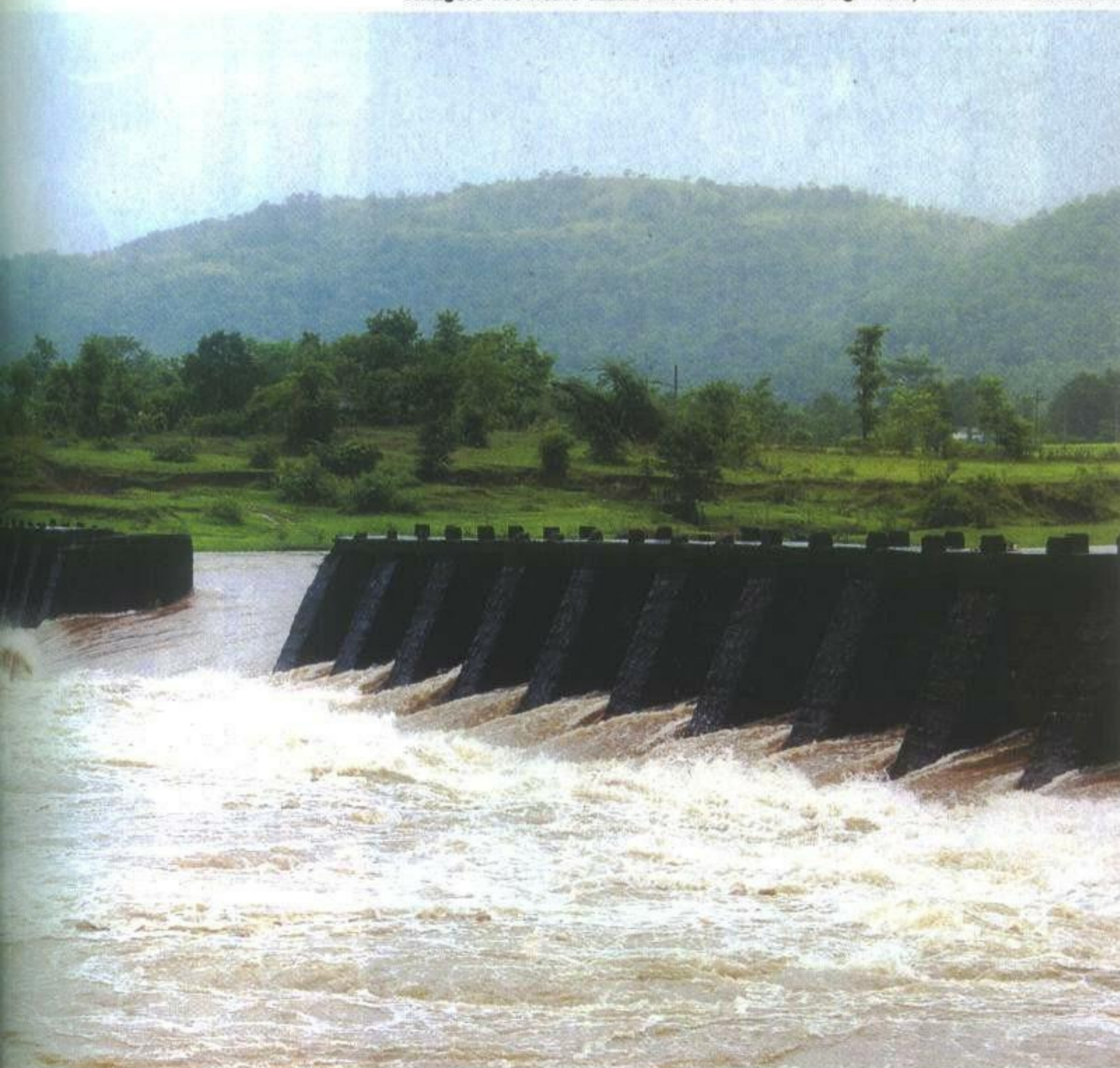
Madhavgad Fort

It can hardly be recognised as a fort today as it is in a state of ruin, but it has seen its share of warring action — a memorial on the road marks this. There are a few temples around town to visit, but if that isn't your scene, just go beyond town and spend some time in the open green fields. It's peaceful here and for once, you can get away from the noise of the waterfalls. Especially during the monsoon, you'll find little streams running about and cattle grazing in the fields. All around there are rustic villagers who are quite friendly and up for a chat.

Text & Photography
Rishad Saam Mehta



Villagers use home-made shelters while tending fields; balconies of Hotel Riverview look out on a fantastic view.



PLACES TO STAY

CHIPLUN

Quality Resort The Riverview

Mumbai - Goa Highway
5km Before Chiplun Stn
Ph: 02355 - 259081-3
reservations@chiplunhotels.com
www.chiplunhotels.com

Fascinating views, good service and very comfortable rooms make this hotel a destination by itself. Equipped with a gym as well as a swimming pool and a play area for kids.

AMBOLI

Please note that the hotels in Amboli are basic. You could stay here or drive back 80km to Kankauli and stay at Hotel Neelam Countryside (see main text).

Hotel JRD International

Vengurla - Belgaum Road,
2 min drive from police post.
Ph: 02363- 240222/4/5
Mumbai bookings
Ph: 022 22675114
Fax: 022 22677429
Restaurant and bar have good enough choice, but the rooms are basic.

Hotel Green Valley Resort

Just behind police post,
Amboli
Ph: 02363 240236
You get a choice of AC and non-AC rooms.

VVT-i engine. More power. More fuel efficiency.



COROLLA

DRIVING DIRECTIONS

■ Fuel stations
 ■ Toll booths
 ■ Caution areas or easily missed turns

Trip set point: Start of Mumbai-Pune Expressway

- 0.0 Get on to the Mumbai-Pune Expressway.
- 33.0 Toll booth.
- 33.7 Khopoli exit. Turn off Expressway.
- 34.1 Hang a sharp right to take the bridge over the Expressway.
- 34.9 Tri-junction. Take the middle road to Pali. Not the one to Pen.
- 50.5 Parli village. Drive through.
- 67.7 Pali. Drive through.
- 76.8 T-junction — Wakan. Turn left towards Mahad and Chiplun.
- 92.2 Kolad town. Drive through with caution.
- 113.0 Mangaon town.
- 142.0 BPCL Pump with Motel Visawa alongside (Mahad) AF.
- 150.1 Toll booth, Rs 5.
- 162.3 Poladpur. Continue straight towards Chiplun and Panaji. (Left goes to Mahabaleshwar 41km away.)

Note: There is a fuel pump here too with good quality fuel.

Note: The road from here on has three ghats — Kashedi, Baste and Parshram respectively. There are hairpins and blind corners galore. But fortunately, not much traffic.

- 200.4 Khed town.
- 224.2 Quality Resorts Hotel Riverview Chiplun.

Reset Trip here

- 0.0 Continue towards Sangameshwar and Panaji
- 5.4 Right T-junction. Continue straight. (Right goes to Chiplun railway station.)
- 8.9 Chiplun roundabout. Continue straight. (Right goes to Chiplun town.)
- 18.2 Kamthe Ghat – caution – plenty of sharp corners over inclines.
- 52.3 HP Pump AF.
- 58.6 Sangameshwar town. Drive through.
- 88.9 Right T-junction. Continue straight. (Right goes to Ratnagiri.)
- 100.2 Pali town.
- 118.1 Lanja town.
- 148.1 Rajapur town. Plenty of dhabas and food joints.

- 165.6 Sindudurg district starts.
- 203.4 Hotel Neelam Countryside (for booking call +91-22-24042501.)
- 205.7 Kankavli town.
- 240.2 Kudal town.
- Note:** There is a small Konkani food restaurant here called Sanma — fantastic fish thali and surmai fry.
- 240.3 Reliance Pump AF.
- 256.1 Left T-junction. Look out for this as it can be easily

missed. Turn left here towards Kohlapur (148km away) for Amboli. This is SH121.

Note: As you near Amboli there are plenty of waterfalls on the way.

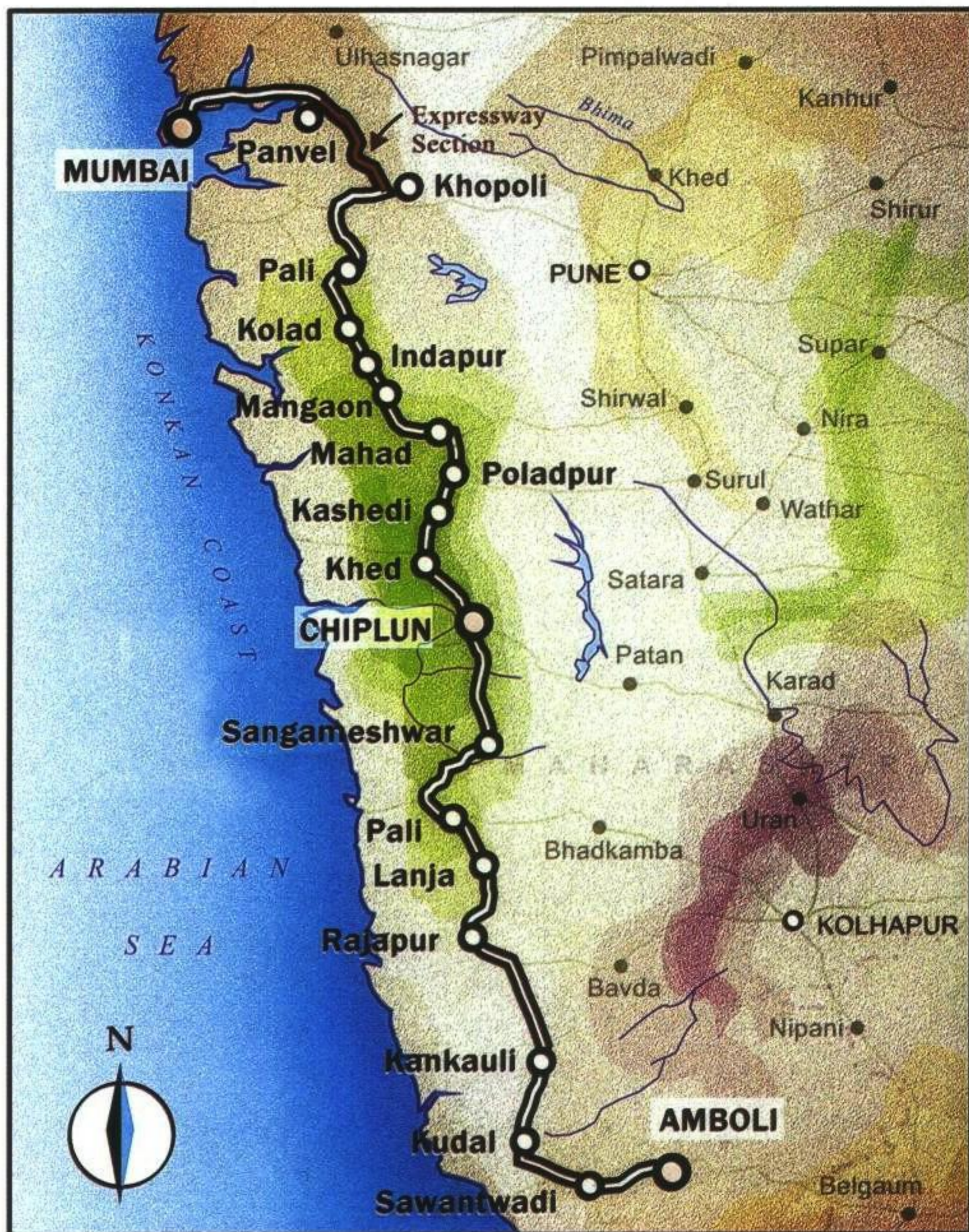
- 286.8 Amboli begins.
- 287.8 Police outpost, Amboli.
- 288.7 Indian Oil pump, Amboli.

Suggested Itinerary

Day 1 Drive from Mumbai to

Chiplun. Explore areas around Chiplun or simply relax.

Day 2 Drive from Chiplun to Amboli. Plenty of waterfalls to get wet under and peaceful surroundings beyond town for quiet moments. Then stay in Amboli or drive back to Kankavli (around 80km) and stay at the Neelam Countryside Hotel.



VVT-i engine. More power. More fuel efficiency.



COROLLA